

# Welcome to St Devenick's

St Devenick's is situated on the beautiful, tranquil Murtle Estate near the banks of the River Dee in Bieldside, just 20 minutes from Aberdeen's centre.

The estate is also home to:

- Camphill School Aberdeen
- Camphill Medical Practice NHS
- Murtle Farm
- Camphill bookshop

Guests can enjoy easy access the Deeside Walkway or relax in St Devenick's garden.

Children with additional support needs are resident on the Estate and use the outdoor environment all year. To respect their privacy, please keep to the main pathway when walking on the estate and refrain from taking photographs on-site.



Camphill Medical Practice NHS: St John's building

*We were especially impressed  
with the peaceful surroundings  
at St Devenick's*

## Our off-site unit :Ash suite

The Ash Suite is a semi-detached two storey house in the quiet Aberdeen suburb of Cults, approximately 3.5 miles from Murtle Estate. With central heating throughout, it is suitable for families but not for those who require accommodation on one level.

It has its own spacious private garden to the rear, single garage and off-street parking for 3 cars. The ground floor has:

- sitting room
- dining room
- fully fitted kitchen.

On the upper floor there are:

- two double bedrooms
- one small single bedroom
- bathroom with toilet, wash hand basin, full-sized bath and separate shower.

## Let us Introduce Ourselves!

Camphill Wellbeing Trust supports the wellbeing of patients and their families through an integrated, person-centred approach to health, education and social care.

CWT is a registered Scottish charity no. SC016291

To find out more about us and our work visit our website:  
[www.camphillwellbeing.org.uk](http://www.camphillwellbeing.org.uk)

Contact us:  
**01224 862008**

[admin@cwt.scot](mailto:admin@cwt.scot)

CWT Office  
St Devenick's  
Murtle Estate  
Bieldside  
Aberdeen  
AB15 9EP

Camphill Wellbeing Trust is a trading name of Camphill Medical Practice Ltd  
Company registered in Scotland No. SC120539



Our  
self-catering  
accommodation

## About our accommodation

- 3 accommodation units on Murtle Estate: Oak, Pine and Rowan
- 1 semi-detached house in nearby Cults: Ash

**Oak & Pine suites:** on-level self-contained suites.  
Pine has disability access.

**Rowan suite:** self-contained two room flat on the upper floor.  
Stair access only.

Our suites are primarily for :

- patients receiving treatment / therapies through CWT & those accompanying them
- people exploring placements for a child, young person or adult relative at Camphill communities Aberdeen.

**Reservations will be prioritised on this basis.**

If we have vacancies, others connected with the Camphill communities may be able to book.

Please contact us to check availability

## A home away from home...

*We aim to offer simple comfortable self-catering accommodation in a peaceful environment.  
We hope all our guests will feel at home during their stay.*

### Oak suite

Bedsit unit with twin beds, kitchen area and soft seating area

Dining/sitting area on open plan with kitchen: dining chairs, comfortable seating

Fully fitted kitchen with fridge/freezer, dish washer, electric hob & double oven

Separate toilet and shower room

Access to shared laundry facilities

### Pine suite

Two bedroom unit each with twin beds, desk, wardrobe

Dining/ sitting area on open plan with kitchen: dining chairs, comfortable seating

Fully fitted kitchen with fridge/freezer, dish washer, electric hob & double oven

Walk-in wet-room shower

Toilet with disabled access

Access to shared laundry facilities

### Rowan suite

Fully self-contained suite on upper floor with 2 interconnecting rooms

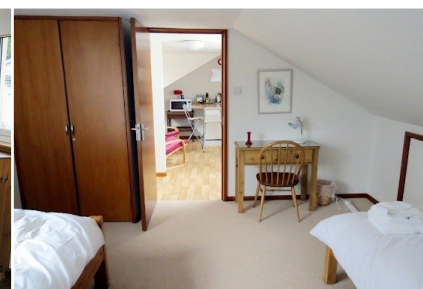
Bedroom with twin beds, fitted wardrobe, desk

Separate toilet with wash-hand basin

Electric shower

Sitting/dining room with kitchen area with fridge, electric two ringed hob, microwave combination oven, breakfast bar

Access to dedicated freezer and shared laundry facilities



## Help us make things even better >>>

We want our accommodation to reflect what our guests need to relax and take full advantage of their therapeutic programmes.

We welcome suggestions about how we can make your stay even more beneficial and enjoyable.

Please fill out our feedback form at the end of your stay or email your comments to: [admin@cwt.scot](mailto:admin@cwt.scot)

## Cost of staying >>>

Our accommodation is mainly financed through CWT fundraising activities and guest donations. We aim to make the accommodation available to those who need it while receiving treatment through CWT or exploring placements at the Camphill communities Aberdeen. The cost to CWT of providing your accommodation is **£40 per person per night**. In order that we can continue to offer accommodation to as many people as possible, **please consider supporting our work by donating as your resources allow**. If you are a UK taxpayer you can increase the value of your donation by filling out a **gift aid form**.

**\*Accommodation is only available on the above basis to patients and those exploring Camphill placements**